

WristCare at Tameside

Overview

- Lead by Tameside Metropolitan Borough Council
- Funded by Invest to Save Budget and TMBC
- 2 years project, completed March 2003
- Background:
 - High rate of falls
 - Delayed winter hospital discharges
 - Lack of Residential Care beds
 - High cost of high intensity Home Care packages
 - Improved User choice
 - Need to improve care for vulnerable people



A WristCare user, with her two daughters.

Cost Benefit Analysis

Capital cost	£30,000
Depreciation (5 yrs)	£6,000
Call out costs (£10pw)	£15,600
Staff (x2)	£75,000
Office space, phones etc	£15,000
Total cost pa	£111,600

Savings

Social Services	£68,918
Health	£84,000
Gross savings (11 mth)	£152,918
Gross savings pa	£166,820

5 year net saving	£276,098
Payback months	5.88



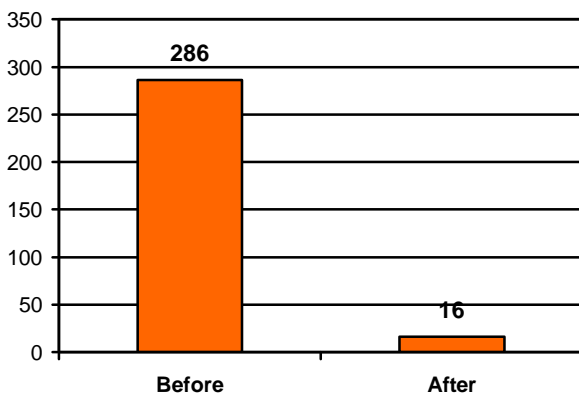
Project Outline

Tameside MBC purchased 30 WristCare Home Systems. These replaced conventional red button social alarms. See literature for product information.

The WristCare Service went operational in January 2002 and is ongoing. Data for the 11 months from start to 31/12/02 was used in the report.

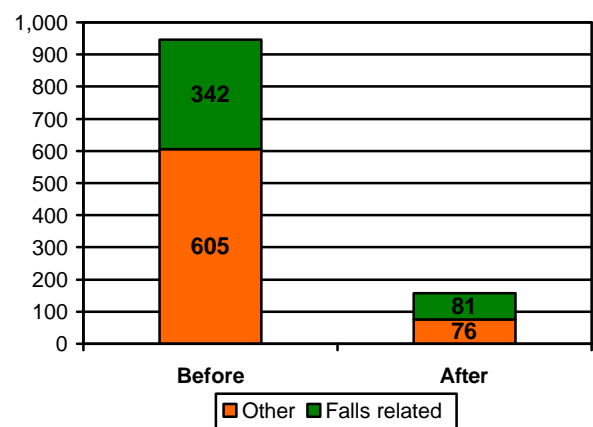
The Service reduced dependency on Home Care, delayed admission to Residential Care, and lead to fewer hospital admissions and bed days. 90% of users said it increased their sense of safety and confidence. 100% said it promoted independence and quality of life.

Reduction in Falls



Comparison of falls 6 months prior to WristCare and total number of falls on WristCare Service

Reduction in Hospital Bed Days



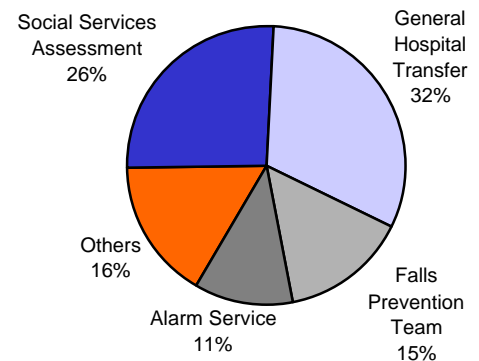
Comparison of Hospital Bed days 12 months prior to WristCare, and total on WristCare Service

Eligibility

Eligibility framework based on results and client feedback.
51% of referrals were assessed as eligible.

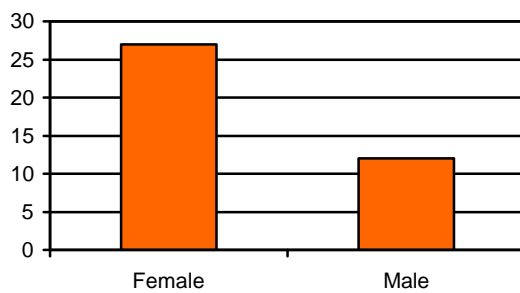
1. Understanding how to use WristCare.
2. At risk of falling.
3. In need of short term monitoring on discharge from hospital.
4. Suffering short-term memory loss.
5. Suffering early onset of dementia.
6. Recurring illness reducing activity / mobility.
7. Feeling unsafe/insecure in their own home.
8. Wanting to remain longer in their own home.
9. Carers suffering anxiety and stress when leaving vulnerable friends/relatives/clients at alone.

Referral Sources

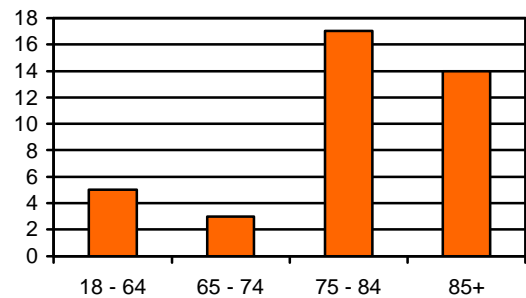


Participants

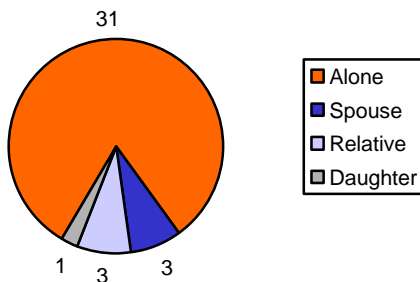
Gender



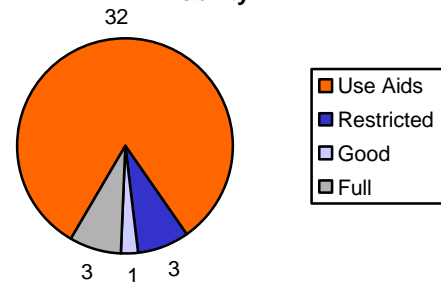
Age



Co-Habitants



Mobility



Conclusion

"It is clear from the evidence obtained that the WristCare Pilot Project has made a very real difference to lives of its participants. Independence has been achieved, the choice to remain at home has been a real and safe option, increased confidence has reduced stress and anxiety, *the fear of falling/fall events reduced to a level where it no longer dominates daily activity* and the reduction, even removal, of formal packages of care where people have regained confidence to manage independently."

Trish Strang, Project Manager, Tameside Metropolitan Borough Council.

The WristCare Home System is simple to implement. It is compatible with Community Alarm Services. For further information, contact Vivatec on 0870 2430 999 or info@Vivatec.co.uk